



Simplex® Fire Products - 4100U File Transfer Utility Guide



TABLE OF CONTENTS

Table of Contents	2
Introduction	3
Simplex 4100U File Transfer Utility Installation	4
How to use the 4100U File Transfer Utility	8
3.1 DOWNLOAD	9
3.2 UPLOAD > CFG	12
3.3 UPLOAD > PANEL LOGS	14
3.4 SETTINGS	16
Required Equipment	17

INTRODUCTION

This guide will run you through the basic instructions to get the “4100U File Transfer Utility” up and running on your PC or Laptop. The Simplex® “4100U File Transfer Utility” can be obtained from your local Simplex Fire representative, or alternatively from our website.

To successfully download to a 4100U fire panel you will need to have the following

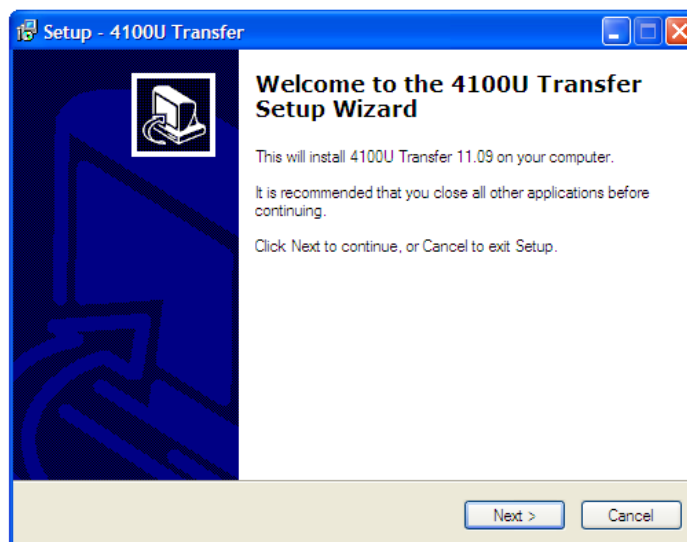
- “4100U File Transfer Utility” correctly installed
- A Simplex 4100 Series Panel download cable (Part ID# 733-794) connected to your pc through a Serial Port (or a USB-to-Serial Converter if your laptop does not have one)
- The correct panel configuration file (e.g. 6017200A.cfg4100) to be installed into the Fire Panel

NOTE – If for any reason you are unsure on any facet of the procedures outlined in this guide, please contact your local Simplex Fire Representative for assistance.

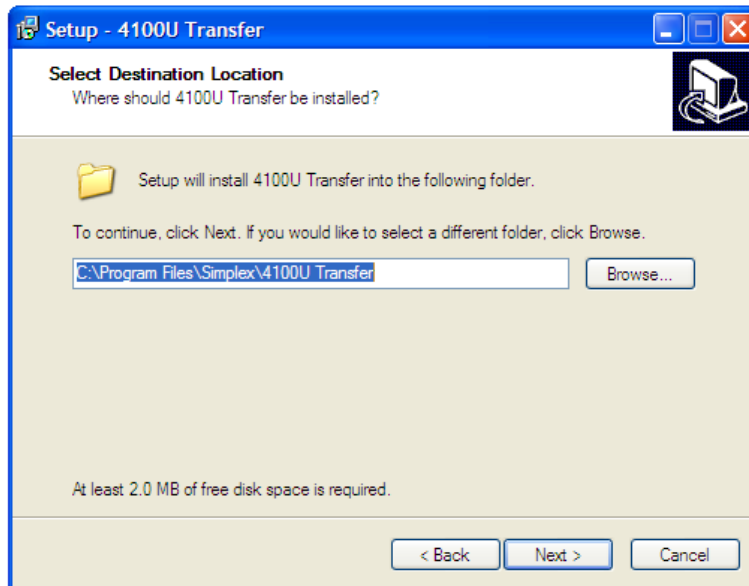
SIMPLEX 4100U FILE TRANSFER UTILITY INSTALLATION

Initially you will need to open the *.Zip file and locate the installation program named “4100UTxfr.exe.” If prompted by your operating system that the file is potentially unsafe please click on the relevant selections that will allow the program to run. This will occur on some machines, depending on your security settings. If this does occur on your operating system, it will most likely occur when running any *.exe file as a *precaution* only. The Simplex File Transfer Utility is safe to install on your computer.

After successfully running the installation file, the following screen will appear.

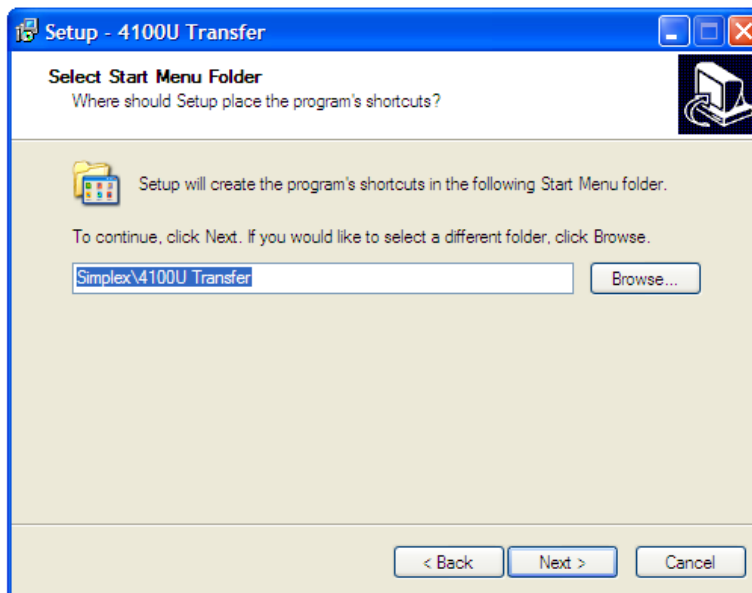


Click on the “Next” Button to display the following screen.

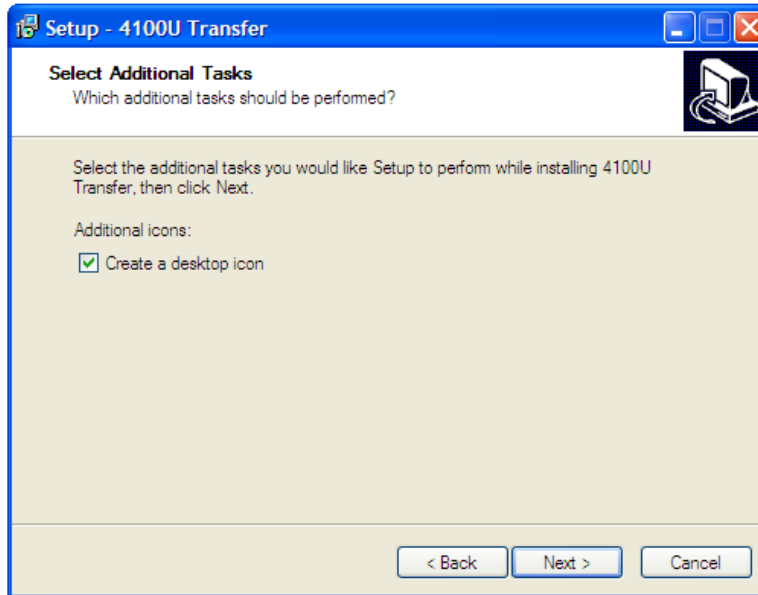


You will then need to choose a directory on your computer to install the program into. It is highly recommended that you leave it to the default listing as shown above.

Once selected, please click the “Next” button. The screen below will be displayed asking you for a location to setup up the shortcuts used for running the program. Once again it is highly recommended that you leave the default listing as shown below.

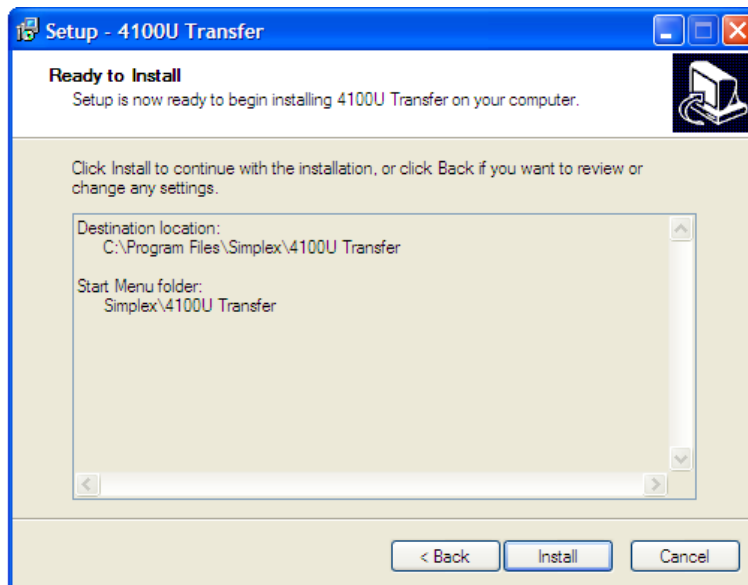


Click on the “Next” button to continue to the next screen.

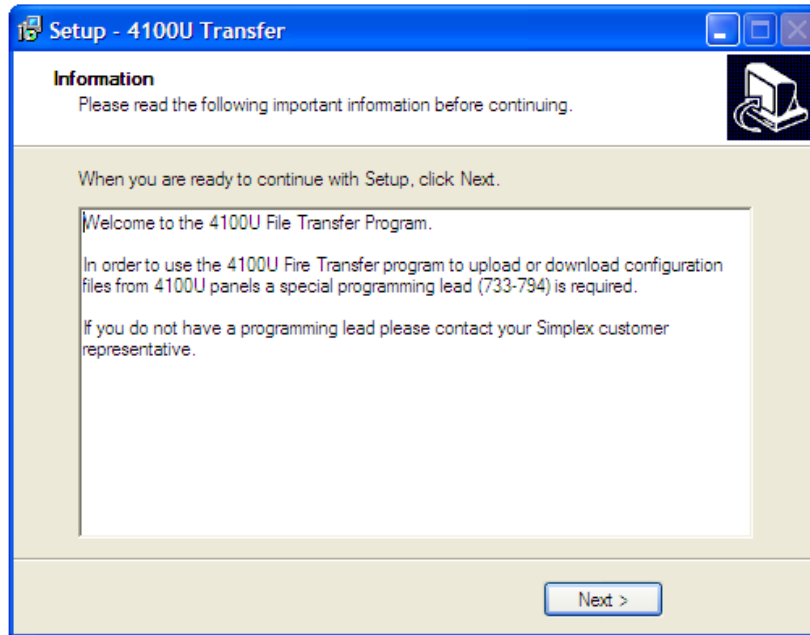


If you require a desktop icon (or desktop shortcut) to more simply find and run the program, then tick the “Create a desktop icon” box as shown above.

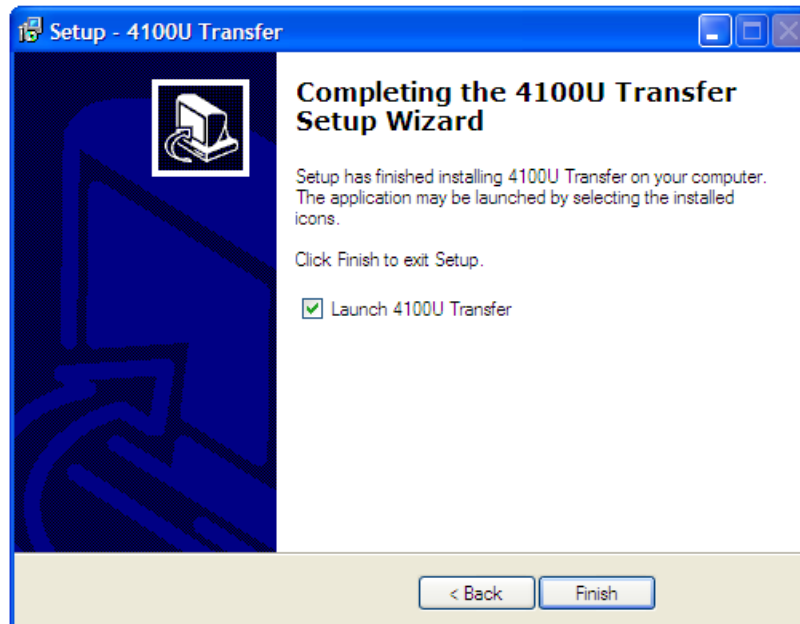
Once completed, please click on the “Next” button once again. The next screen to appear will then display the directories you have chosen, and by clicking the “Install” button you will be able to begin the installation process.



Once the installation process has completed, the following screen will appear (shown below). It displays some basic information and mentions the part number of the download cable that will be required to connect to the Simplex 4100U Series Fire Panels.



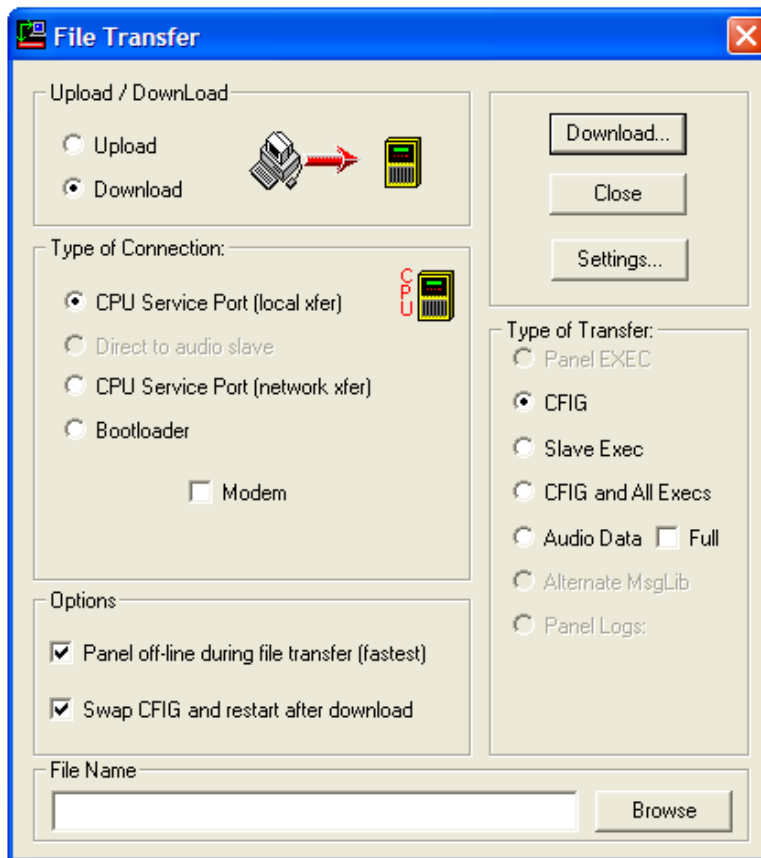
Click on “Next” to continue. The following screen will appear confirming that the installation of the 4100U File Transfer Utility has been complete. Clicking on the “Finish” button will complete the installation and launch the File Transfer Utility.



HOW TO USE THE 4100U FILE TRANSFER UTILITY

To run the Simplex 4100U File Transfer Utility please access the shortcut from either the desktop (if you created a desktop icon) or from your start menu (Start Menu > Programs > Simplex > 4100U Transfer on Windows XP for example).

The File Transfer Utility is shown below

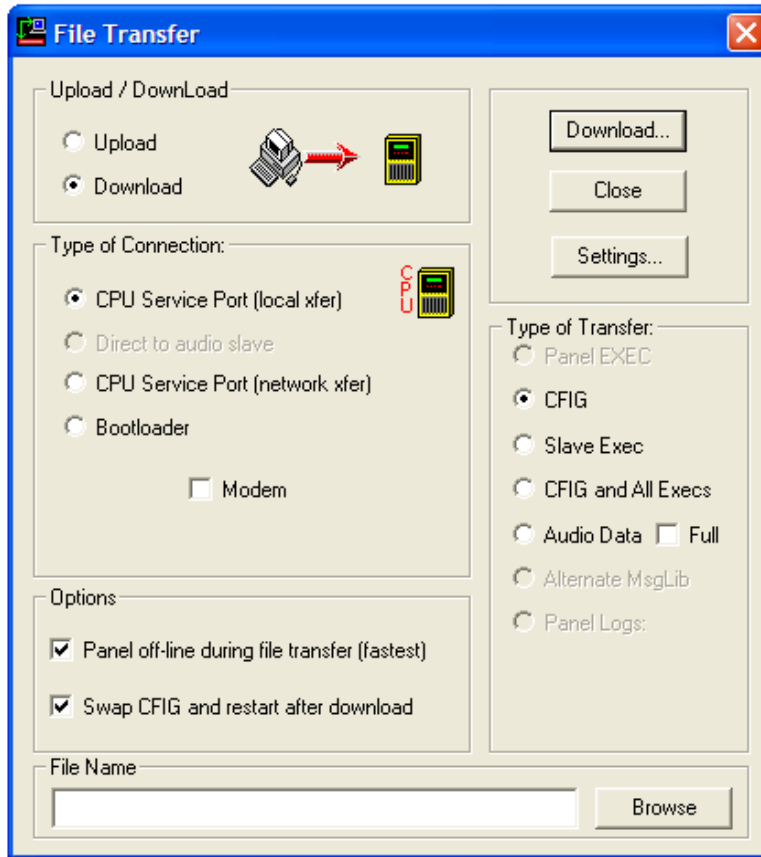


There are three main selections that are commonly utilised when communicating to a 4100U Fire Panel.

- **DOWNLOAD**
- **UPLOAD > CFIG**
- **UPLOAD > PANEL LOGS**

3.1 Download

A “Download” is the transfer of a Panel Configuration file from a PC/Laptop to a Fire Panel (the picture in the Upload/Download area of the utility depicts this).



To successfully “Download” to a 4100U Panel, you will need to use ONLY the following options, else risk the normal operation of the fire panel.

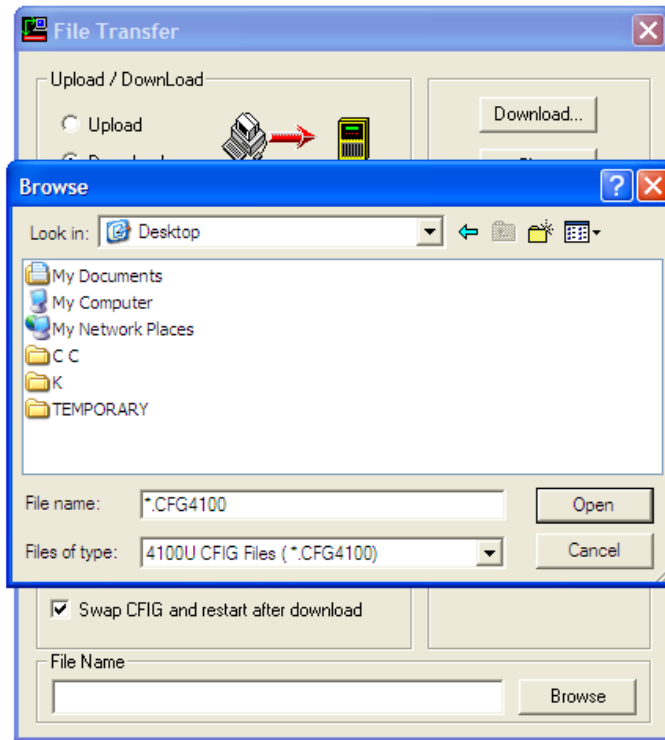
- Select “Download” from the “Upload/Download” segment of the utility screen
- Select “CPU Service Port (local xfer)” in the “Type of Connection” segment
- Leave both of the “Options” boxes ticked
- Select “CFIG” from the “Type of Transfer” segment on the utility screen

Once these items are selected, you will need to click on the “Browse” button located in the bottom right hand corner of the utility screen. Another window will pop-up and ask you to locate the configuration file on your computer. (Shown below)

NOTE – if you have received an emailed Config file from Simplex Personnel, you will need to save the file on your hard drive. I recommend creating a directory on your C: (Hard drive) named “4100U Jobs.” This will then allow you to keep a backup of all of your downloads in a known location on your hard drive.

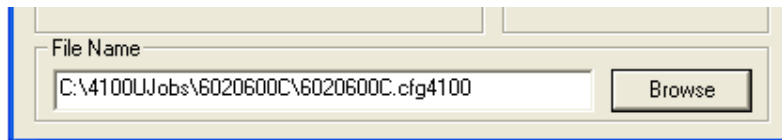


Once you locate your Job Config file, select it and click on the “Open” button to load it into the file transfer utility.



You will then notice that the “File Name” segment of the File Transfer Utility has a directory listing (This is just the utility noting where it will be downloading the information from).

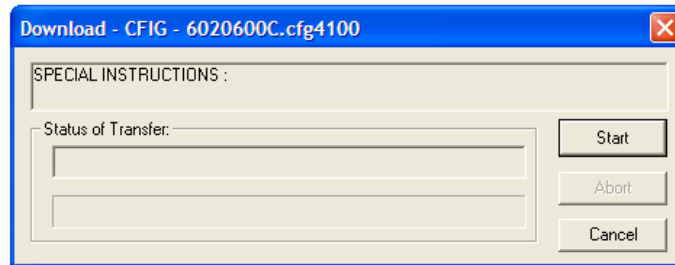
An example is show below



Now that all of the settings are correct and you have selected the file you wish to transmit to the fire panel you are ready to download.

Please make sure that your laptop is NOT plugged into a wall socket (as this generates Earth Ground Faults) and that the Download cable is correctly connected to both the serial port on your computer (or the USB-to-Serial Converter you may be using) and the download port found on the main fascia of the 4100U Panel.

Once the cable is connected and you are ready to begin, click on the “Download” button located in the top right corner of the utility. The following window will appear. Clicking on the “Start” button will commence the download.



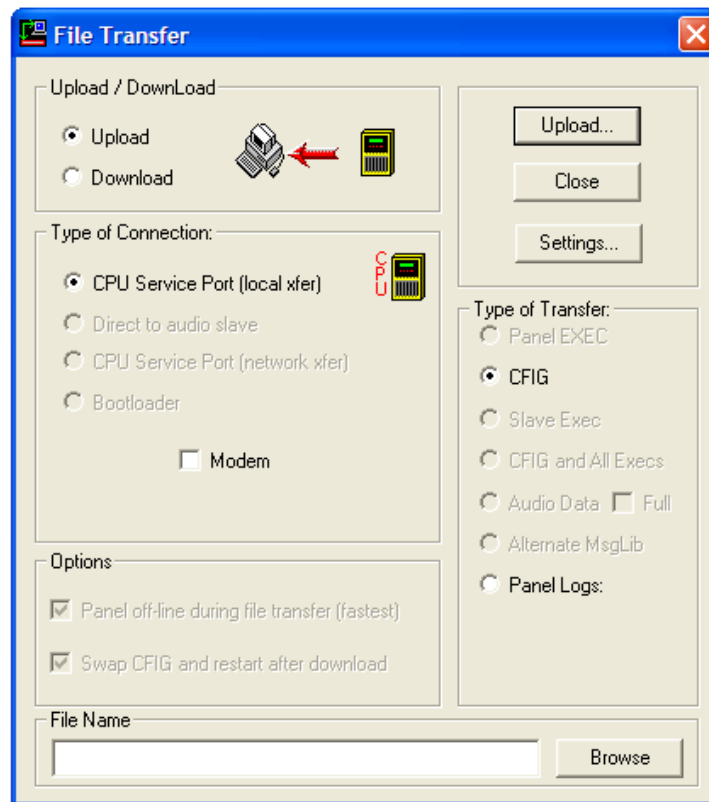
You should see a blue bar being to appear in the “Status of Transfer” bar as the transfer progresses indicating the progress of the download. You will also notice a text description such as 1 of 578 packets received (for example) – which is a numerical progress indication. (The size of the program will determine the length of time required to complete the download)

When the download is completed a pop-up box will appear informing you that the download has in fact completed, and the panel will begin an automatic warm-restart. Please allow 2-5mins for the panel to fully come back online and effectively to communicate to all of its associated devices.

3.2 Upload > CFG

Non-Simplex personnel will rarely be required to “Upload” a configuration (CFG) from a panel. A CFG is uploaded only when an archived configuration has become corrupted or unusable on the Simplex National database, and the Fire Panel Configuration needs to be recovered.

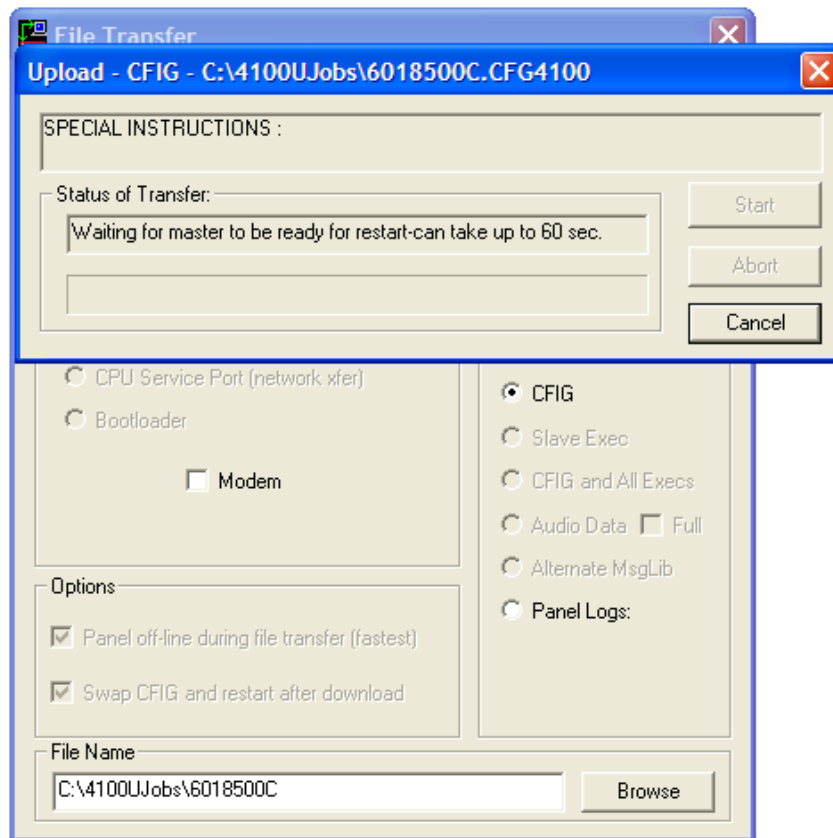
NOTE – An uploaded CFG file will need to be sent to Simplex Personnel to decompile so that the information can be converted back into a usable format



To begin, select the options as shown above from the relevant segments of the utility. When completed, you will need to select a place to store the soon to be uploaded information. Using the “Browse” button, select a suitable location (Recommended – C:\4100Ujobs).

Once a directory to save to is selected, click on the “Upload” button to proceed.

The following screen will appear.



NOTE – the upload will commence transmission to the selected directory. In the example above you can see that it will be saved to “C:\4100Ujobs\” and the file will be named “6018500C.CFG4100”

Once completed you can exit the File Transfer Utility and locate the file on your hard drive. It is now ready to be emailed to your local Simplex branch for decompiling.

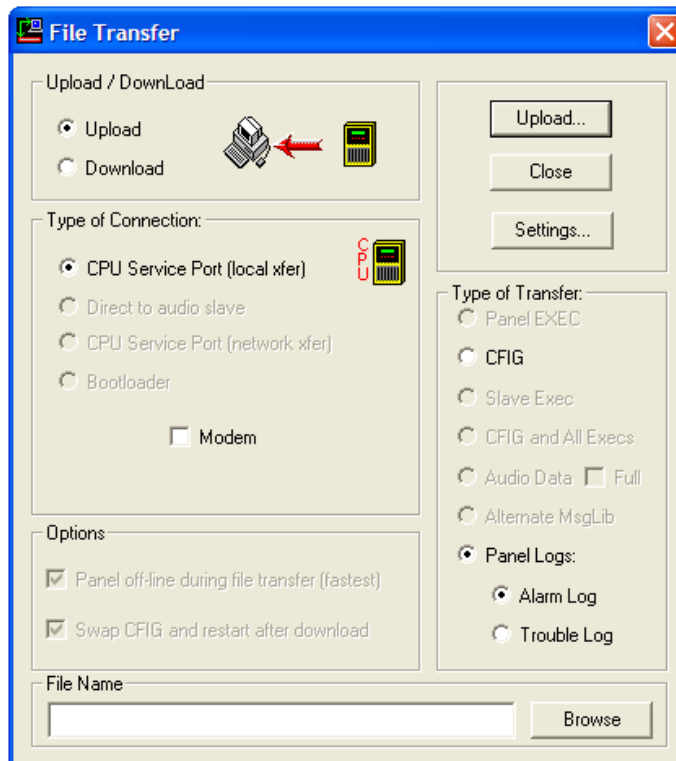
3.3 Upload > Panel Logs

The File Transfer Utility has the ability to Upload both the Alarm and Trouble (Fault) logs into a viewable file on your pc/laptop.

To begin,

- Select the Upload option in the Upload/Download segment of the utility.
- Select the “CPU Service Port (local xfer)” option in the Type of connection field
- Select the “Panel Logs:” option from the Type of Transfer

The historical logs will need to be uploaded individually from the panel in question, so choose either the Alarm Log or Trouble (Fault) log option as their procedures are the same.



For examples sake, I will select the “Alarm Log” option (shown above). Now you are ready to select a location to store the information and its associated file name.

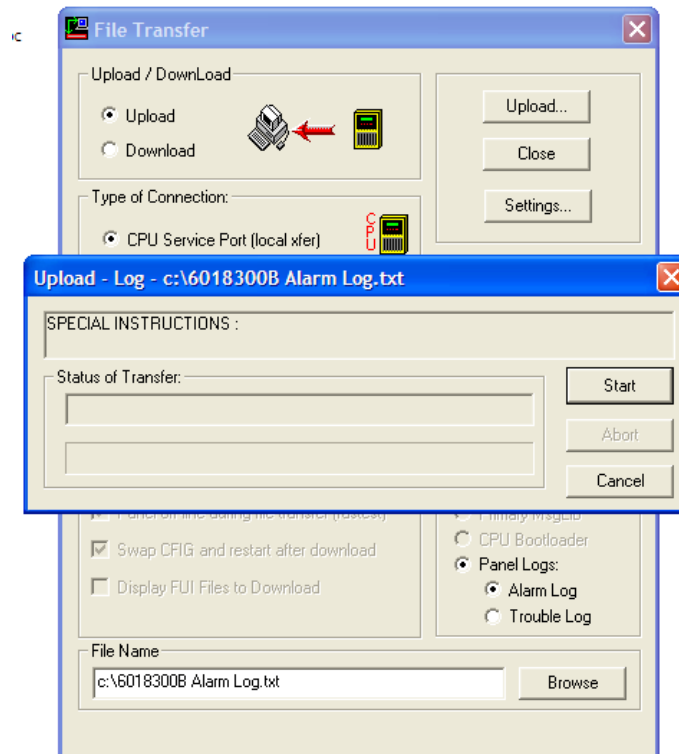
- Click on the “Browse” button located in the File Name segment to select a location to save the file OR just type a directory straight into the File Name field.
- I recommend saving the file to your C: (main hard drive) at least temporarily and then relocate it once the transfer has completed.

To save the file correctly you will need to type it in the following format

C:\6018300B Alarm Log.txt

(Where the “6018300B” is the panel name, “6018300B Alarm Log” is the file name and the “.txt” is the format you wish to save the data into)

NOTE – it is highly recommended you save the file as a *.txt format as you can then open the file on any computer running Windows 2000 (or above)

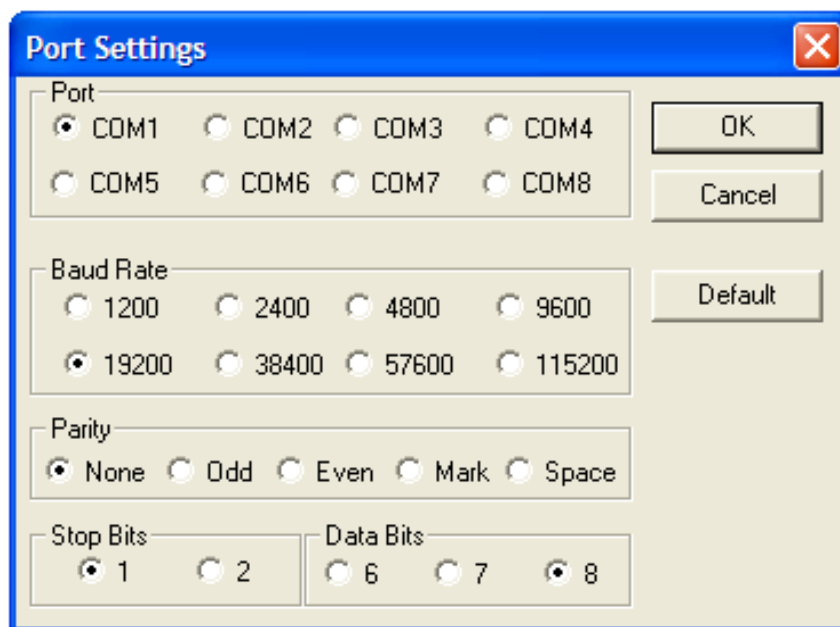


- Once a suitable file name and directory are entered into the File Name field click the “Upload” button followed by the “Start” button to commence the data transfer
- Once the download has completed – you will be able to access the log file from the directory you chose earlier (i.e. My Computer > C: in the above example)

3.4 Settings

There should be no reason to alter the “Settings” button located in the top right hand corner as they are defaulted during the initial installation. But if for some reason you need to set them back to standard, just select the options found in the diagram below.

NOTE – if your computer has more than 1 serial port OR you are using a USB-to-Serial converter you may need to select a different COM port depending on what your operating system has allocated to it.



Once completed, click “OK” to acknowledge.

REQUIRED EQUIPMENT

- Dell Laptop (D630 or equivalent) with an operating system of Windows 2000 (or above)
- Simplex Download Cable (Part ID# 733-794)
- USB-to-Serial Converter (where required)
 - ⇒ Altronics USB-to-Serial Converter - Part Number: D2340A

NOTE – some operating systems may require driver installation to allow the device to function correctly – normally supplied with the product if required



THIS PAGE HAS BEEN LEFT BLANK INTENTIONALLY